

Need a Mortgage in principle
to make offers? Call us now
for quick assistance!
0121 775 0101



Do you need to sell?
Start your journey now!
Call us we can help.
0121 775 0101



SCAN FOR MORE INFO
SIZE - 1127 Sq Ft
TENURE - Freehold
COUNCIL TAX - Solihull MBC - E
BROADBAND - Upload Max 220Mbps
Download Max 1000Mbps
MOBILE - EE Three
EPC - C - 71
PARKING - For at least 4 Cars
FLOODRISK - Very Low
SERVICES - Mains
COVENANTS - N/A

ALDERSHAWS
Dickens Heath, B90

This beautifully presented detached family home offers a perfect blend of comfort and modern living. Built in 2000, the property spans an impressive 1,127 square feet and is conveniently located within walking distance of the vibrant Dickens Heath village centre, which boasts a variety of excellent amenities.

FEATURES

- Beautifully Presented Detached Family Home
- Potential to Extend to Rear (STPP)
- Spacious Lounge with Separate Dining Room
- Contemporary Fitted Kitchen
- Principal Bedroom wit En-Suite Shower Room
- Second Double Bedroom & Good Sized Single Third
- Modern Family Bathroom
- Ample Driveway Parking with Single Garage
- Rear Garden with Feature Summerhouse
- Fabulous Location for Village Centre Amenitiies

Are you an investor
interested in expanding your
portfolio?

Call 0121 775 0101 to provide your investment criteria for alerts.



SCAN TO **VIEW OUR**
WEEKLY FILMS &
SUBSCRIBE

Sneak Peeks

Every week, we unveil "Sneak Peeks," a feature showcasing exclusive properties before they hit Rightmove and other platforms.

The Landlord Club

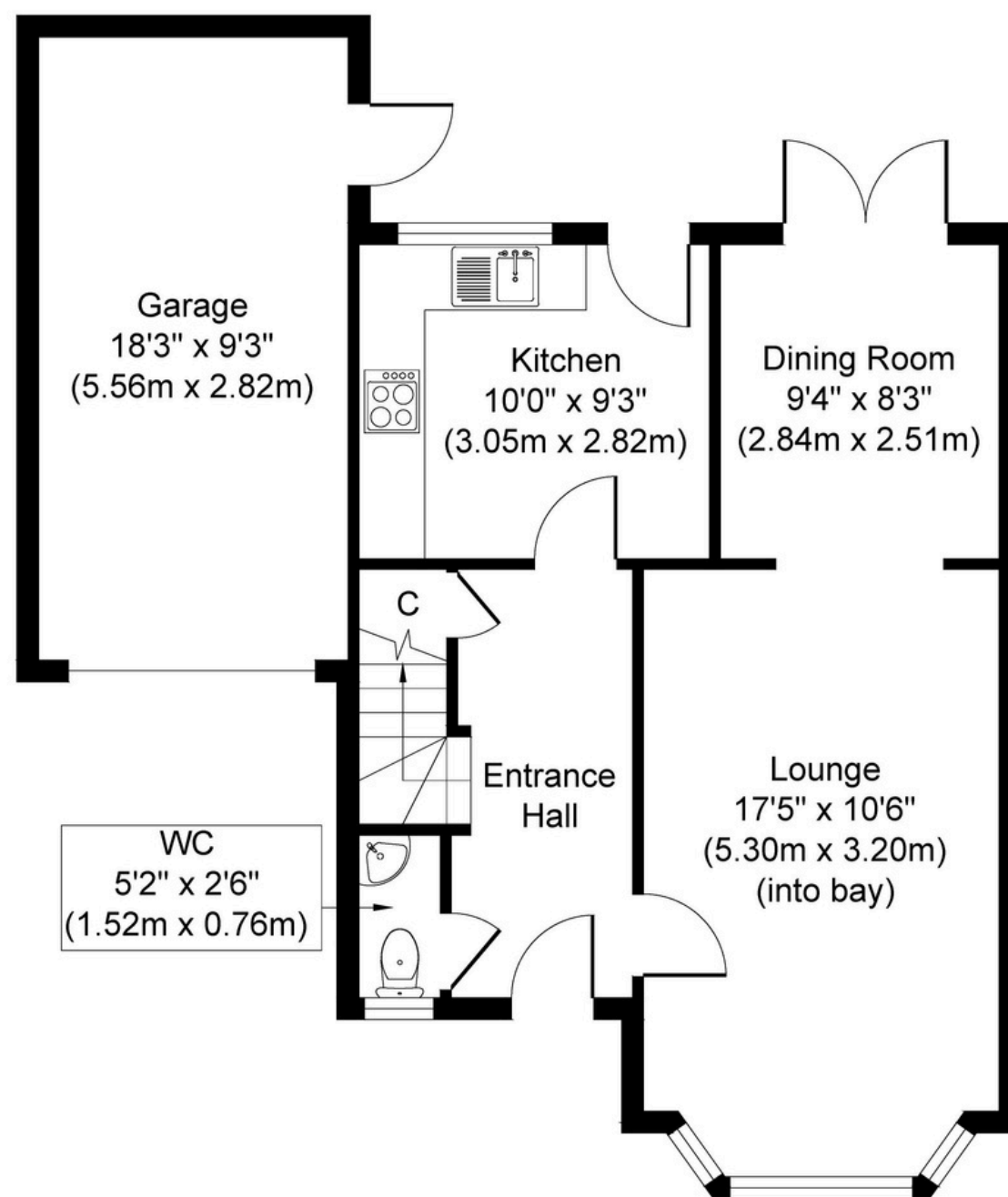
Join our Landlord Club for weekly updates on legislation, market trends, and our Letting Director's 'Investment Pick of the Week' for optimal ROI.

HTSPMD

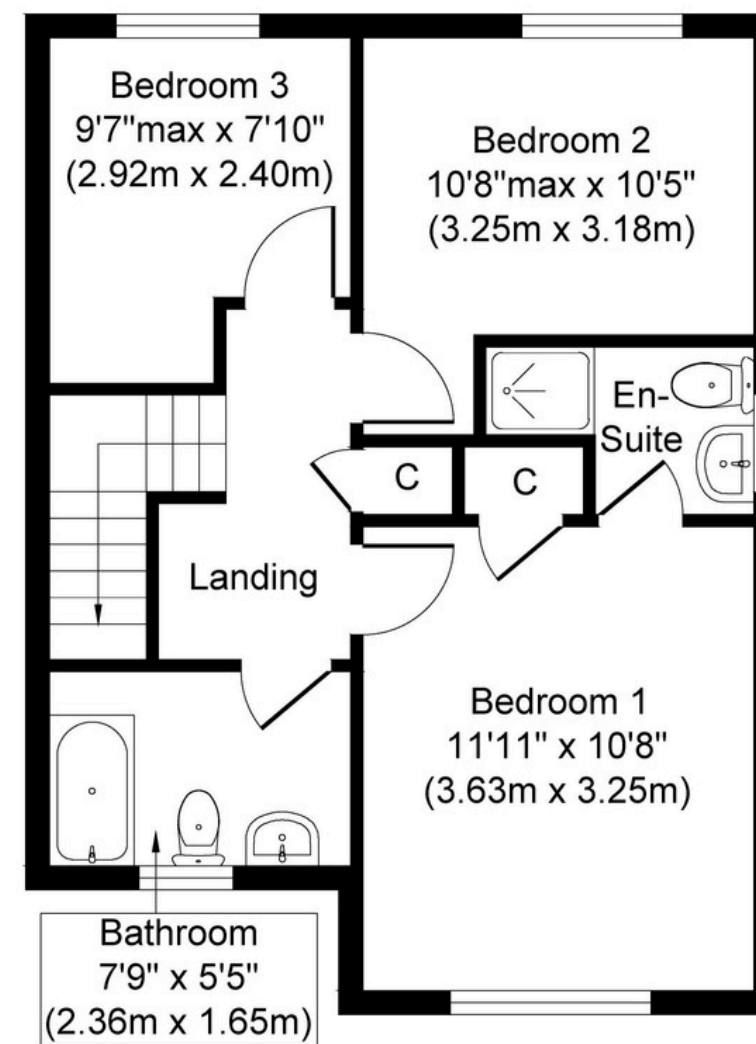
Tune into 'How's The Solihull Property Market Dom' weekly for a quick, insightful snapshot of the market.

The Mortgage Update

Get weekly insights and the best deals with our Mortgage Update, your shortcut to navigating the complex mortgage landscape confidently.



Ground Floor
Approximate Floor Area
659 sq. ft
(61.22 sq. m)



First Floor
Approximate Floor Area
468 sq. ft
(43.48 sq. m)

Whilst every attempt has been made to ensure the accuracy of the floor plan contained here, measurements of doors, windows, rooms and any other items are approximate and no responsibility is taken for any error, omission, or mis-statement. The measurements should not be relied upon for valuation, transaction and/or funding purposes. This plan is for illustrative purposes only and should be used as such by any prospective purchaser or tenant.

The services, systems and appliances shown have not been tested and no guarantee as to their operability or efficiency can be given.

Copyright V360 Ltd 2024 | www.houseviz.com